

Pick up a copy of this month's *Deadly Vibe* magazine, the special Reconciliation edition, and complete the following activities.

READING

LONG WALKS AGAIN

The Long Walk will once again bring black and white Australia together.



Michael Long has announced a second Long Walk to follow up his now legendary walk to Canberra in November 2004.

The Long Walk of 2005 will be held in Melbourne on Sunday, December 4 and will commemorate the final leg of the original Long Walk. It will give all of Australia the chance to walk together to show their support of Indigenous Australia.

The original walk, in which Michael walked from Melbourne to Canberra to raise awareness of the plight of Indigenous Australians, saw thousands of Australians from all walks of life join in. The success of his mission made Michael realise that Australians want to work together to change the appalling conditions that so many Indigenous people face.

The Long Walk 2005 is an attempt to recapture this feeling of community. It will also be a fundraiser for the Sir Douglas Nicholls Fellowship for Indigenous Leadership. The Fellowship is dedicated to fostering Indigenous leadership and recognising the contribution Indigenous people make to Australian society.

Sir Douglas Nicholls was a talented footballer, tireless social worker and outspoken Aboriginal activist. His contribution to both his own people and a broader Australia was recognised when he became the first Aboriginal Australian ever to be knighted.

You can register your interest or leave messages of support on the Long Walk website at www.thelongwalk.com.au





COMPREHENSION

Answer all questions using full sentences.

★ When and where will the Long Walk of 2005 be held?

★ What is the purpose of the Long Walk?

★ Who was Sir Douglas Nicholls?

Circle the correct answer to the following statement.

★ For which fellowship will The Long walk raise funds for?

- a. Aboriginal and Torres Strait Islander Fellowship
- b. Australian Aboriginal Fellowship
- c. Michael Long Fellowship for Indigenous Talent Development
- d. Sir Douglas Nicholls Fellowship for Indigenous Leadership

Answer true (T) or false (F) to the following statement.

★ The original walk, in which Michael walked from Melbourne to Canberra saw thousands of Australians from all walks of life join in. _____

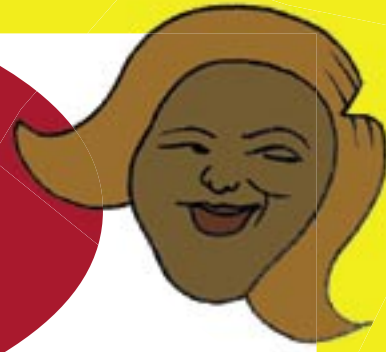


When we convert a statement into a question, changes have to be made.

For example:

STATEMENT: The Long Walk will once again bring black and white Australia together.

QUESTION: Will the Long Walk once again bring black and white Australia together?



STATEMENTS AND QUESTIONS

Change the following statements into questions.

★ It will give all of Australia the chance to walk together to show their support of Indigenous Australia.

★ Australians want to work together to change the appalling conditions that so many Indigenous people face.

Change the following questions into statements.

★ Is the Fellowship dedicated to fostering Indigenous leadership?

★ Is the Long Walk an attempt to recapture this feeling of community?

NOUNS AND COMMON NOUNS

A **noun** is the name of a person, place or thing. **Common nouns** are the names of ordinary things you can hear, see, touch or taste. They only begin with a capital letter when they are the first word in a sentence.

EXAMPLES: football magazine telephone

Circle all the common nouns below.

Melbourne	walk	together	show
support	Indigenous	original	awareness
plight	Indigenous	join	success
mission	work	together	appalling
conditions	face	recapture	feeling
community	fundraiser	fostering	leadership
contribution	people	society	footballer
worker	activist	broader	knighted

PROPER NOUNS

Proper nouns are the names of particular people, places, events or things. They always start with a capital letter.

EXAMPLES: Nambucca Heads Ernie Dingo

Underline the proper nouns in each sentence.

- ★ The Long Walk will once again bring black and white Australia together.
- ★ Michael Long has announced a second Long Walk to follow up his now legendary walk to Canberra in November 2004.
- ★ The Long Walk of 2005 will be held in Melbourne on Sunday, December 4 and will commemorate the final leg of the original Long Walk.
- ★ It will give all of Australia the chance to walk together to show their support of Indigenous Australia.
- ★ The original walk, in which Michael walked from Melbourne to Canberra to raise awareness of the plight of Indigenous Australians, saw thousands of Australians from all walks of life join in.





★ The success of his mission made Michael realise that Australians want to work together to change the appalling conditions that so many Indigenous people face.

★ The Long Walk 2005 is an attempt to recapture this feeling of community.

★ It will also be a fundraiser for the Sir Douglas Nicholls Fellowship for Indigenous Leadership.

★ The Fellowship is dedicated to fostering Indigenous leadership and recognising the contribution Indigenous people make to Australian society.

★ Sir Douglas Nicholls was a talented footballer, tireless social worker and outspoken Aboriginal activist.

★ His contribution to both his own people and a broader Australia was recognised when he became the first Aboriginal Australian ever to be knighted.

SPELLING

Many words ending in **e** drop the **e** when adding **ing**: For example, **love** becomes **loving**.

Some exceptions are: **agree, eye, glue.**

Add **ing to these words. Write the whole word again.**

contribute _____

attempt _____

foster _____

make _____

recognise _____

leave _____

recapture _____

commemorate _____

announce _____

feel _____





PUZZLE

Find the words in the word find. Words can go horizontally, vertically and diagonally in all directions.

W R E T S I G E R J M D M D N S C T R M M Y
 P M M K B C N K C W W G N E O O O T E C M T
 K E M H G R M C T C O O P T I C M S H P L H
 E S O N L R G A J I I H R A S I M E T P E K
 T D S P O M B L T T R E S C S A E R E H A D
 I N O L L I J B U R D E Z I I L M E G J V N
 S A C I E E T B S A E R L D M H O T O W E L
 B S I G G A I U O E E S K E W W R N T L A G
 E U E H V R D R B K G L I D S F A I R N R N
 W O T T T R B E R I K A D A O S T P I V V I
 W H Y N A D L O R X R S S O R C E G Z R P S
 X T O I G Z W K V S S T T S O D I T M L Y I
 F C S C H A N C E E H B N M E R N E F I L N
 M E Y N Q K Z T C L A I M O O M Z U L M F G
 N D E N J N M C E L T U P T C P R C F P R O
 F W C L T X U G L V N T A Q W M M C V T T C
 O P Z H I S E E N I N L J K N I G H T E D E
 L W P V A N R R T I E O U T S P O K E N P R
 L A H M D N G Y O N S N O I T I D N O C R P
 O L L A K C G J T M F H P M F A C E Q N N R
 W K R G N I R E T S O F W S U P P O R T M N
 T Y J T X R D E R U T P A C E R C L L L T B

black	follow	mission	success
broader	footballer	original	support
chance	fostering	outspoken	talented
change	fundraiser	people	thousands
commemorate	interest	plight	tireless
community	join	raise	together
conditions	knighted	recapture	walk
contribution	leadership	recognising	website
contribution	leave	register	worker
dedicated	legendary	show	
face	life	social	
feeling	messages	society	



PUZZLE SOLUTION

